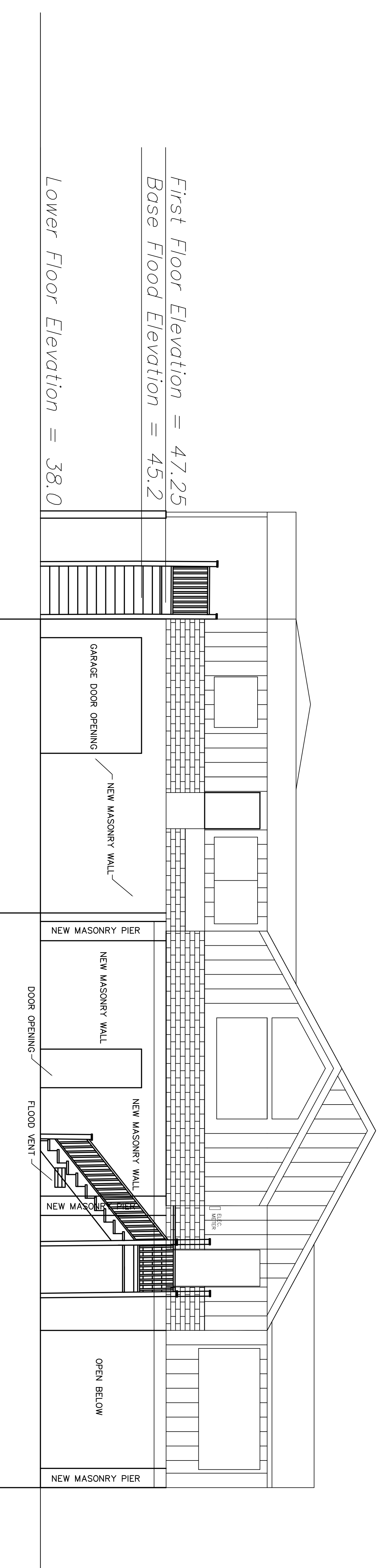


EXISTING FRONT ELEVATION
SCALE: 1/4" = 1'-0"



PROPOSED FRONT ELEVATION
SCALE: 1/4" = 1'-0"

ALL DOCUMENTS PREPARED BY REMINGTON & VERNICK ENGINEERS, ARE INSTRUMENTS OF SERVICE. THEY ARE NOT TO BE REPRODUCED OR TRANSMITTED IN ANY FORM OR BY ANY MEANS, ELECTRONIC OR MECHANICAL, INCLUDING PHOTOCOPYING, RECORDING, OR BY ANY INFORMATION STORAGE AND RETRIEVAL SYSTEM, WITHOUT THE WRITTEN PERMISSION OF REMINGTON & VERNICK ENGINEERS. ANY REUSE WITHOUT WRITTEN PERMISSION OF REMINGTON & VERNICK ENGINEERS IS PROHIBITED. REMINGTON & VERNICK ENGINEERS SHALL NOT BE LIABLE FOR ANY DAMAGES, INCLUDING REASONABLE ATTORNEY'S FEES, ARISING OUT OF OR RESULTING FROM THE USE OF ANY INSTRUMENT OF SERVICE PREPARED BY REMINGTON & VERNICK ENGINEERS.

NO.	REVISION	DATE	BY	CHK.	BY
FRONT ELEVATIONS					
1451 RIVER ROAD					
LOWER MAKEFIELD TOWNSHIP					
BUCKS COUNTY, PENNSYLVANIA					
DATE: _____					
THOMAS F. BEACH PROFESSIONAL ENGINEER LIC. NO. PE-093946-E					
R.V. REMINGTON, VERNICK & BRACH ENGINEERS					
922 FAVETTE STREET, CONSHOHOCKEN, PA. 19428					
TEL: (610) 940-1050 FAX: (610) 346-1161 WEB SITE ADDRESS: WWW.RVE.COM					
DRAWN: JMB DATE: 6/2013					
CHECKED: JMB					
DATE: 6/2013					
SCALE: 1/4" = 1'-0"					